

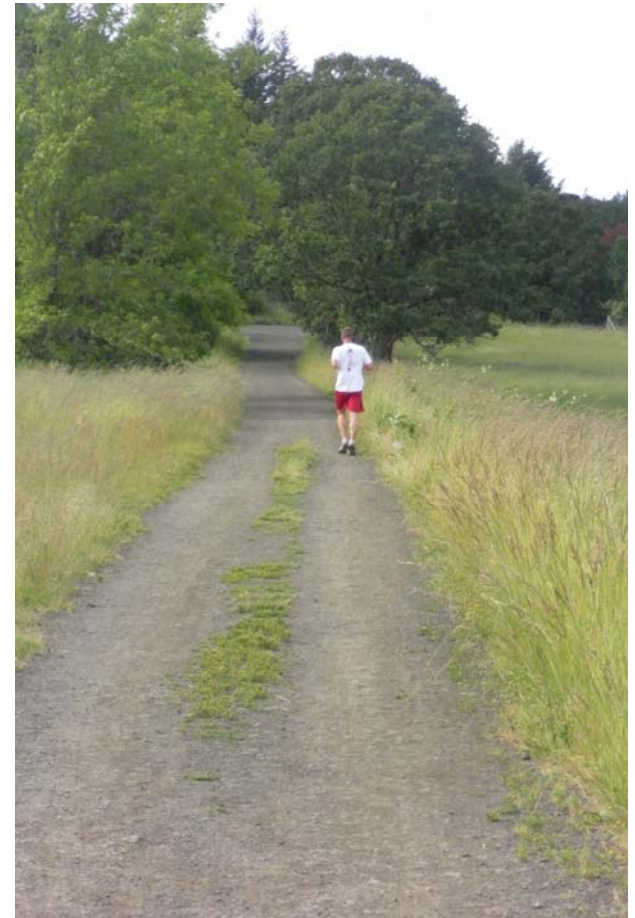
Trails ... Connecting People and Open Spaces

“Walking the footpaths and wooded trails of the greenbelt would become our most popular recreation, and a passionate interest for many. Everyone would enjoy a greenbelt and none more than our myriad successors destined to trod its trails far into the future.”

- Charlie and Elsie Ross, GLT Founders

- Bald Hill Farm will serve as a critical trail connector from Philomath to Corvallis and from Bald Hill to Fitton Green
- This connector is identified in the 2003 Benton County Trail System Plan as the first priority for potential trail connections
- Trail connectors will be identified in conjunction with Benton County Parks and Natural Areas, the City of Corvallis Parks Department, and local trails groups
- Pathways will protect critical conservation areas, while allowing users to enjoy a landscape with rare plants and wildlife
- Bald Hill Farm will add at least 2.8 miles of trails to the existing network at Bald Hill and Mulkey Creek
- Maintenance and enhancement of trails will be led by Greenbelt Staff and volunteers, and partner organizations
- Key research has shown that park and open space proximity is associated with higher levels of physical activity among a variety of populations, particularly youth

A 2010 Benton County survey showed that residents ranked walking, hiking, and enjoying the natural environment as the most enjoyed and used forms of recreation in the mid-Willamette Valley.



Trail runner at Bald Hill Natural Area