



LIVING WITH NATURE

Landowners: A Legacy of Healthy Lands

For every acre of land that Greenbelt Land Trust has protected throughout the last 22 years, there has been a landowner working diligently to ensure that their farm, floodplain forest, wetland, or vista is preserved. In listening to their stories, we find a common thread connecting *why* they chose to preserve their land. These landowners are the modern-day Muir's and Thoreau's ... working to improve the quality of life for the people, wildlife, and plants in our community, while leaving a legacy of open spaces for future generations.

When Ann Marchant began thinking about placing her 220 acre property along Evergreen Creek into conservation protection, she had two family members who really championed the project ... her children. "It is immensely appealing that high school students could have the opportunity to do ecology projects on this property. My own children were impacted tremendously by similar opportunities

in the community, and the thought that this protected property could serve as a classroom for future students is one of the reasons that I chose to pursue this partnership with Greenbelt." ~ Ann Marchant.

On any given day, you can find landowner Ed Rust standing knee deep at dusk in ponds along the floodplain of the Willamette River to watch thousands of birds descending towards the water on his property. One year after closing on two conservation easements with GLT, Rust reflects on how his appreciation for Cinnamon Teals, Pintails, and Virginia Rails led him to conservation. "Years of outdoor activities and working at local wildlife refuges brought me to the conclusion that more wildlife-friendly areas are needed. Most developed areas do not provide for this, so some of us have to, for balance." ~ Ed Rust.

Continued on page 3

WINTER/SPRING 2011 Annual Report

Meyer Memorial Trust Grants Awarded to Greenbelt Land Trust

Greenbelt Land Trust (GLT) is pleased to announce the receipt of two grants from the Meyer Memorial Trust (MMT), totaling \$140,170. Funding has been provided from the MMT Willamette River Initiative program to facilitate landowner outreach and support pre-acquisition costs for several prospective floodplain and farmland projects along the Willamette River.

Support from the MMT Willamette River Initiative will enable GLT to work with additional landowners to further conservation opportunities on properties adjacent to the Willamette River between Monroe and Albany. Funding will assist with land appraisals, associated legal fees, environmental assessments, and personnel costs.

"The Meyer Memorial Trust has committed to a long-term effort to build capacity among land trusts, watershed councils, and others to do good conservation planning and work along the Willamette River. Funding from this very generous grant will allow for the Greenbelt Land Trust to expand its current conservation work to include additional landowners in key reaches along the Willamette River corridor." ~ Michael Pope, GLT Executive Director.



Aerial view of Mid-Willamette River





Board of Directors

Cary Stephens, **President**
Betty Griffiths, **Vice President**
Lyle Hutchens, **Secretary**
Jack Mykrantz, **Treasurer**
Douglas Brodie
Paige Fischer
Ethan Hasenstein
Nancy Hathaway
Chris Kiilsgaard
Keli Kuykendall
John Martinsen
Joanne McLennan

Emeritus Members

Meg Campbell
Steve McLaughlin

Staff

Michael Pope
Executive Director
michael@greenbeltlandtrust.org

Claire Fiegenger
Special Projects Manager
Newsletter Editor/Designer
claire@greenbeltlandtrust.org

Stephan Friedt
Office Administrator
stephan@greenbeltlandtrust.org

Steve Lilly
Volunteer Coordinator
steve@greenbeltlandtrust.org

Jeff Baker
Stewardship Program Manager
jeff@greenbeltlandtrust.org

Jessica McDonald
Development Coordinator
jessica@greenbeltlandtrust.org

Denise Richards
Administrative Assistant
denise@greenbeltlandtrust.org

Dan Rosenberg
Lands Coordinator
dan@greenbeltlandtrust.org

The Greenbelt Land Trust acts to conserve and protect in perpetuity native habitats, working lands and lands of natural beauty, which provide a connection to the natural world for the residents of the Mid-Willamette Valley.

Greenbelt Land Trust
PO Box 1721
Corvallis, OR 97339
541.752.9609

info@greenbeltlandtrust.org
www.greenbeltlandtrust.org

Get into Nature Calendar of Events

Saturday, February 12th, 9.30 am - 1 pm, Riparian Restoration at Owens Farm, Corvallis

Join us as we plant Douglas spirea along a riparian zone. Meet at Greenbelt office. Contact Steve for more info. at steve@greenbeltlandtrust.org or by cell: 541.207.5529.

Thursday, February 17th, 6 pm - 8 pm, Greenbelt Annual Meeting, 1st Presbyterian Church, 114 SW 8th St, Corvallis

Join us for our Annual Meeting! Learn about the work we did with your support in 2010, and our plans for the next year. See back page for more details.

Saturday, March 5th, 9 am - 12 pm, Archeology Tour of Willamette Bluffs - TOUR FULL

Dave Brauner, OSU anthropologist, will join us to talk about the rich history of the region, from Native American to western settler uses, and the dynamic history of the river.

Friday, March 11th, 9.30 am, Ecology, Management, & Control of False-brome Workshop, Corvallis Library

This workshop is to provide land managers and owners with an understanding of the life history, management, and control of false-brome in the mid-Willamette Valley. There will be a morning workshop session, followed by afternoon field trips. RSVP to Debbie Johnson (debbie@applegateforestry.com).

Saturday, March 12th, 9.30 am - 1 pm, SOLV Workday with Philomath High School @ Lupine Meadows, Philomath

Help us as we partner with PHS students and BSWCD to plant 100 native plants. Meet at Greenbelt office. Contact Steve for more info. at steve@greenbeltlandtrust.org or by cell: 541.207.5529.

Saturday, March 19th, 9.30 am - 12 noon, False-brome Monitoring Workday at Owens Farm, Corvallis

Help the Greenbelt detect and flag this noxious weed for future eradication. Meet at Greenbelt office. Contact Steve for more info. at steve@greenbeltlandtrust.org or by cell: 541.207.5529.

Wednesday, March 30th, 7 pm, Living with Nature Lecture Series - Beaver, Corvallis Public Library

Join the Greenbelt and hear Jimmy Taylor, Wildlife Biologist with USDA, discuss beaver in the Willamette Valley at our extremely popular lecture series.

Saturday, May 14th, 9.30 am - 1 pm, Habitat Restoration Workday at Lupine Meadows, Philomath

Search for and flag meadow knapweed for future removal, and fence removal for easier access for mowers will take place. Meet at Greenbelt office. Contact Steve for more info. at steve@greenbeltlandtrust.org or by cell: 541.207.5529.

Sunday, May 15th, 1 pm - 4 pm, Newton Creek Stream of Consciousness Tour - Philomath

Join the 4th annual urban creek tour led by Benton Soil and Water Conservation District - and visit Lupine Meadows as one of the tours stops. RSVP to Heath Keirstead, Benton SWCD, HKeirstead@bentonswcd.org, 541.753.7208.

Saturday, May 21st, 9am - 12 noon, Lupine Meadows Open House, Philomath

Join us for our annual open house at Lupine Meadows to tour the site and view Fender's blue butterflies in flight. Meet at Greenbelt office to carpool to site.

Sunday, June 5th, 9 am 8k Trail Run Start, 5th Annual Run for the Hills, Bald Hill Natural Area, Corvallis

This year's event is scheduled for June 5, 2011 at the Benton County Fairgrounds entrance to Bald Hill Park. The event has raised thousands of dollars to maintain the trails around Corvallis. For more information, visit the race web page at www.gltrunforthehills.com, or contact the race director Cary Stephens at 541-753-4794 or stephens@bwbslaw.com.

For more info. contact Greenbelt at 541.752.9609 or visit www.greenbeltlandtrust.org.
Offices located at 101 SW Western Blvd., Corvallis Oregon.

Welcome



Dan Rosenberg joined Greenbelt Land Trust in 2011 as Lands Coordinator. He holds a BS in Biology and Wildlife Science from Virginia Tech, and an MS and PhD in Wildlife Science from OSU. Dan is also Co-Director of the Oregon Wildlife Institute (OWI) and on the faculty of Oregon State University's Department of Fisheries and Wildlife. He joined the GLT team to pursue his interest in protecting important conservation lands in the Willamette Valley. Dan and his wife enjoy all forms of outdoor recreation, maintaining a small farm, and being regularly entertained and exercised by their two Australian Shepherds.

A Legacy of Healthy Lands

Continued from Front Page

As landowners adjacent to a complex backchannel of the Willamette River north of Monroe, the Horning family realized long ago the role their property plays in the dynamics of the River. "Our family has worked and lived on the Willamette River for five generations, which is why we take such pride in showing we can work around the river sustainably. We know the health of our crops depends on the health of the river system. Our goal for restoration is to utilize important floodplain areas to improve water quality and protect the valuable farmland that our family farm depends on." – Gary Horning.

"Much of the Willamette Valley is owned by families who have worked the land for many generations and appreciate the fish and wildlife found in their forests, rivers, meadows and wetlands. They have a deep commitment to maintain these values on their lands so that when their children and grand-children walk the edge of their river, fields and forests, they, too, will see meadowlarks, deer, and eagles," Michael Pope. It is because of people like Ann, Ed and Gary, that our community is blessed with the green spaces and water systems that enhance the livability of our region.

2010 Volunteer of the Year

Anthony Stumbo

Anthony, a Greenbelt volunteer since 2007 originally from Eugene, OR, is the owner of Anthony's Painting Service in Corvallis. He is also very involved in the community, serving as the President of Friends of the Refuge and as an active volunteer with the City of Corvallis' MLK Committee. Anthony is a volunteer that has always given his time whether setting up for a volunteer workday, planting native plants or helping during our restoration workdays with schools, OSU and other great organizations in the community. Thank YOU Anthony!



2010 Charles Ross Award

Jean & Jack Nath

Since they joined as members 21 years ago, Jean and Jack Nath have continued to inspire others through their active involvement and commitment to open spaces, recreation, and wildlife protection. In recognition of their support and leadership in the conservation of Willamette Valley lands, Greenbelt Land Trust awards this year's **Charles Ross Award** to Jean and Jack. From 1997 to 2004 the Naths served as Board of Directors for Greenbelt, a term that oversaw the protection of Owens Farm through an open space bond measure, Forest Dell Park, and an addition to Jackson Frazier Wetlands. Over the last year the Naths have participated in more events, property tours and public lectures than any other member, continuing a long tradition of caring about our natural areas.



Volunteers Needed

We are always looking for volunteers to help with our work with local schools and this spring to work building and monitoring bluebird boxes. Contact Steve Lilly if interested in volunteering for the Greenbelt at steve@greenbeltlandtrust.org or 541.752.9609, 541.207.5529(c).

Sign up to receive eUpdates and get our monthly eCalendar and our quarterly newsletter emailed directly to you. For more information or to sign up, please email us at info@greenbeltlandtrust.org.

2010 Annual Report

GREENBELT LAND TRUST

2,588

Volunteer Hours Logged

664

Native Trees Planted

1 in 5

of donors who have
been 20+ yr. members

17

of states members live
& make donations from

Program Highlights

Land Conservation

- Worked with 13 landowners in 3 counties to identify conservation priorities on their properties
- Awarded \$140,170 grant from Meyer Memorial Trust to facilitate pre-acquisition costs for Willamette River conservation and partially fund a Lands Coordinator position
- Completed 3 land appraisals for potential properties
- Awarded \$25,000 from the Doris Duke Foundation and \$19,000 from BPA to fund appraisal costs
- Awarded \$22,000 from Salmon Habitat Fund for evaluations of a key Willamette floodplain.
- Awarded a \$1.8 million dollar grant from Oregon Watershed Enhancement Board's Willamette Special Investment Partnership fund for conservation easements on properties along the Willamette River

Stewardship

Once GLT has protected a property, we carry a serious responsibility to steward and enhance its native attributes in perpetuity. All Stewardship activities are in response to property management plans that detail the timeline and outcomes for each site.

- Awarded 4 Restoration Grants worth \$224,035
- Completed Management Plans for 4 Conservation Easements
- Removed 2,000 feet of drain tile at our Evergreen property, restoring hydrology
- 3,000 ft. of fencing, 1,100 ft. of waterline, and 4 water troughs installed to manage cattle grazing in upland prairie habitat at Lone Star Ranch
- 664 native trees planted, mulched and watered at the Little Willamette

Education/Outreach

- Logged 2,588 volunteer hours!
- 250 Calapooia Middle School students planted over 500 trees at the Little Willamette
- Partnered with 8 schools in Benton and Linn Counties to provide 'learning laboratories' for education on our land
- In 2010 nearly 6,000 people have been involved with GLT through our outreach, tours, and educational opportunities
- Inaugurated our quarterly Living With Nature Lecture Series, with tremendous success
- Celebrated the first-ever Trust the Land fundraiser and art auction, raising over \$5,000 for the organization

Conservation Partnerships

- Facilitated a 'Working Landscapes' workshop in collaboration with The Nature Conservancy and Trout Mountain Forestry at the Oregon Watershed Enhancement Board state conference in Pendleton
- Received formal support letters for our conservation work from The Nature Conservancy, US Fish and Wildlife Service, Institute for Applied Ecology, Benton County Commissioners, Benton County Natural Areas & Parks Department, the Sierra Club, Marys River Watershed Council, OR Department of Fish and Wildlife, and the Audubon Society.
- Collaborated with conservation partners and landowners during the 'Within Our Reach: Working Together for a Healthier Willamette' symposium
- Participated in regional planning related to the BPA Wildlife Settlement, Willamette Biological Opinion, and Ecosystem Services

A Year in Review



Tour of Fitton Green



Tour of Tye Winery during our 'Trust the Land' art & wine event



Partnering with Benton Co. for tour of Bezell Natural Area



Critical floodplain habitat Greenbelt is working to protect along Willamette River



Run for the Hills



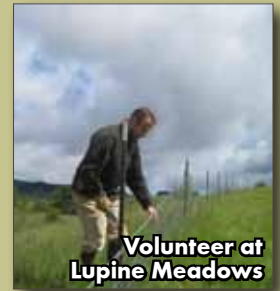
Students planting at Little Willamette



Students planting at Owens Farm



'Trust the Land' art & wine event



Volunteer at Lupine Meadows



Financial Summary

\$1,639,667
Total Investments & Legacy Funds

\$1,420,800
Total Land Value

1,286
Total Acres Protected

Income

Membership Donations
Land Acquisition
Stewardship
Bequests
Grants
Other

Total Income Expenses

Programs
Fundraising
Administrative

Total Expenses

FY 09-10

\$207,979
\$7,174
\$14,555
\$309,001
\$145,473
\$12,663

\$696,845

FY 08-09

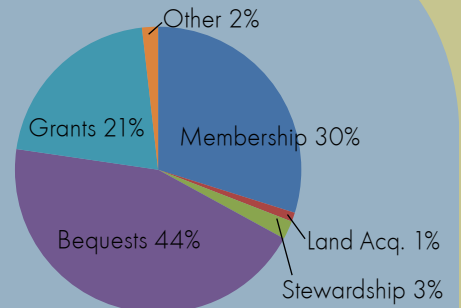
\$198,866
\$34,070
\$87,307
\$202,150
\$1,819,098
\$11,612

\$2,353,103

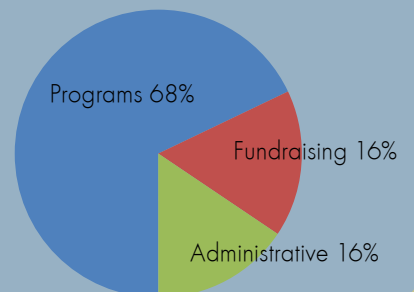
\$572,829

\$2,083,692

Income



Expenses



To request Audited Financial Statements please contact our office at 541.752.9609.

GREENBELT LAND TRUST SUPPORTERS



The Greenbelt Land Trust would like to thank the following members for supporting our mission in 2010.

GRANTS

Bonneville Power Administration through OR Department of Fish and Wildlife, Ducks Unlimited, Doris Duke Foundation through The Nature Conservancy, Emily Hall Tremaine Foundation, Meyer Memorial Trust, OR Watershed Enhancement Board, Salmon Habitat Fund, Benton Soil & Water Conservation District, U.S. Fish & Wildlife Service.

CONSERVATION CIRCLE

Anonymous*, Betty and Bob Griffiths ♦, Bob and Sally Duncan ♦, Doug and Ann Brodie ♦, The Estate of Rudi and Christel Engelbrecht, Cliff Heselton, The Estate of David and Jane Loomis, Jack and Barbara Mykrantz, Mary Pope Osborne*, Tom Bucht and Tricia Santrock, Nancy Schary ♦, Kathryn Stokes ♦, Janet Throop ♦, Richard and Doris Waring ♦.

MILLENNIUM CIRCLE

Anonymous (In Honor of Chris Moser)*, Ann and Sarah Batten ♦, Bill and Nan Beck, Owen and Ruth Bentley ♦, Natalie and John Boyce*, Marguerite Campbell ♦, Irving Dayton ♦, First Alternative Cooperative, Paige Fischer and Seamus Walsh, Don and Roberta Hall ♦, Jim and Mary Hall ♦, Nancy Hathaway and Greg Peterson ♦, David Heck and Gloria Wong, Eric and Bonnie Helpenstell, Johnson Controls, Joe Kerkvliet and Cassandra Manuelito-Kerkvliet, David and Caroline Lorusso, Chris and Kate Mathews, McDowell Charitable Trust, Steve McLaughlin, Dan Schafer and Jean Sifneos ♦, Simple Actions Family Foundation, Aaron Spitzer and Cindy Smith, James and Joyce Spain, Cary and Lori Stephens, The Estate of Jean Uhler*.

PATRON CIRCLE

Anonymous (4), Boris and Joyce Becker, Jim Boyle, DEVCO Engineering, Inc., Bill and Eija Emmingham, Bruce Frey and Laura Hansen, Neal and Barbara Gladstone ♦, Peter Harr and Sharon O'Hara Harr, Lyle and Sharon Hutchens, David Jones*, Scott and Angie McFarland, Charles Miller and Martha Clemons, John and Sandra Potter ♦, Michael Pope and Becca Lemon*, Nan Roos, Barbara and Darrah Thomas, Heather Throop, Doris Tilles ♦, Tremaine Foundation, Charles and Freda Vars ♦, John and Susan Watson ♦, Stewart and Janet Wershow ♦.

GUARANTOR CIRCLE

Norman and Margaret Anderson ♦, Jack and Jane Barth, Peter and Carole Beedlow, John and Kerry Bliss, Molly Bloomfield, Jim and Deborah Clark ♦, Kent and Patricia Daniels ♦, Ronald Davis and Karen Starleaf, Sue Dornfeld, David and Sarah Ehlers, David Finch and Mary Flahive ♦, Martha Fraundorf, Bob and Liz Frenkel ♦, Neal and Barbara Gladstone, Doug Gordon*, Marjorie Goss, Ethan and Liisa Hasenstein*, Tony Howell and Patricia Benner ♦, James and Sara Ingle, Craig and Nancy Leman ♦, Robyn Lillehei*, Steve and Nancy Lindsey ♦, Daniel Luoma and Joyce Eberhart, Larry and Cynthia Mahrt, Bruce McCune and Patricia Muir ♦, Keith McCreight and Linda Modrell, Joanne and Seaton McLennan, Molly Monroe and Jarod Jebousek*, John and Gretchen Morris, Jack and Jean Nath ♦, Mary O'Malley*, Tom Pflieger ♦, Wayne and Verlyne Phillips, Steve Polasky and Liz Davis, William and Caroline Pollak, Leslie Redpath, Don and Betsy Reid ♦, Ralph and Dorothy Reiley, Paul and Mary Ann Roberts, Dan Rosenberg and Jennifer Gervais, Jim Roy, Ryan Sparks, Bond and Marilyn Starker, Frederick Swanson ♦, Don Takush*, Marolyn Tarrant, Austin and Melvina Walter ♦, Ron and Carlien Williams*, Ted Wilson and Ellen Tappan, Inga Zasada*.

SUPPORTING CIRCLE

Don Armstrong and Mary Kentula, John and Gina Auer, Gilbert and Elinor Beck, David Birkes, Frank Bretl, Karyle Butcher, Joe and Pam Casprowiak, Ken and Henny Chambers ♦, Rich and Charlene Clark, Herb and Linda Crew ♦, Brian and Kelli Cripe, Thomas Doane*, Theo Dreher and Connie Bozarth, Chris and Dianne Dunfield ♦, John and Ellie Erkkila, Charles and Susan Fisher, Edwin and Victoria Fox, Maynard and Erin Freemole, Robert and Millicent Gardner ♦, Mike and Donna Gemperle, Jim Good and Janet Morlan, Tom and Jeanne Griffith, Stan and Ellen Hall, Warren and Laurie Halsey, Jim and Mariellen Harper, Phillip Hays ♦, Ken and Lise Hedberg ♦, Marilyn Henderson*, Bill and Lynda Hohenboken*, John and Marilyn Hull, Karen and Kim Jones, Russ and Marla



We have made every effort to ensure accuracy of this list. If you find an error or omission, please contact our office.



GREENBELT LAND TRUST SUPPORTERS



Matt Blakeley-Smith

Karow, Glenn Klein ♦, Carol Krakauer ♦, John and Judy Ladd, Dick and Carol Lantz, Milt and Wilma Larson, Robert Latham and Constance Georgiou ♦, Richard Leman and Donna Ching, Octave and Mary Jo Levenspiel, Paul Liebaert and Laura Uhler, Richard Liebaert, Michael Linse and Joan Weihs-Linse*, Marie Long*, Paul Malamud, Pat and Betty Malone, Julia Maloney ♦, Bob and Judy Malouf, Tom and Marilyn Marker, Margaret Martin ♦, Peter and Esther McEvoy ♦, Pat and Ann Megowan ♦, Lisa Millbank, Julia Mooney ♦, Kelly Moore, Arthur and Jean Morgan, Tom and Ellen Murphy, Marguerite Nabeta, John and Denise Nervik, Peter and Susan Nelson, Rick Olson*, Rob Pabst, Virginia Pear*, Ron Perry and Laurie Labbitt, Jim and Anna Maire Phelps, Donald Phillips and Margaret Arentz*, Leslie and Nancy Pliskin ♦, Bill Pope*, Willard and Patricia Potts, Melinda Pyle, Leslie Redpath, Ralph and Barbara Reed ♦, David Reinert, James Paul Rodell, Linda Roberts, Jack and Marnie Ross ♦, Ronald Seymour*, David and Cheryl Shear, Donna Sirmans, Howard and Dorothy Smith, Chuck and Melissa Sollitt, Robert Spetter and Michele Gazica*, John and Sue Tappeiner, Rich and Patti Tittrup*, Charlie and Maria Tomlinson, Cliff and Jo Anne Trow ♦, Pat and Teresa Welch, Tamra Wiggins-Wahlert, Judy Williams and Zach Golik*, Will Wright and Kim Nelson*, Bill and Penny York, Lowell and Ruth Ann Young.

General Circle

Anonymous (2), Paul and Carol Adamus, Ralph and Marge Alig, Anne and Timothy Allen*, Ed Alverson, Steve and Kristi Amsberry*, John and Beverly Arthur, Ann Asbell, Ellen Austin, Alan Ayres ♦, Jeff and LeeAnn Baker, Edwin Barker, Kathleen Barteo, Todd Bastian*, Steven and Molly Bell, Pat Berman*, Tom and Debbie Birdseye, Norman and Patricia Bishop, Charles and Elizabeth Blass, Jan Bottjer and Paula Minear, Arthur and Barbara Boucot ♦, Mary Elizabeth Braun, Hal and Lida Brauner, Renee J. Brooks, Jerry Brown and Cheryl Babb, Todd and Susan Brown, David and Margy Buchanan, John and Shirley Byrne ♦, Chris and Jim Cantey, Jane Capizzi ♦, Carleton and Paulette Carroll, Bruce and Diana Carsten, Randy Chakerian and Diane Henneberger, Doris Charles, David Chiller and Zuzana Vejlupekova, Chintimini Garden Club, Climate Source, Dick and Rosalie Clinton, Jennifer and Jeff Cohey*, Relan Colley ♦, Randy and Pam Comeleo, Dick and Leona Converse ♦, Margaret Coon ♦, Patricia D'Andrade*, May Dasch ♦, Glenn Davenport, Alvin Davis, Doris delespinasse*, Joyce Demonnin, John and Nancy Dennis ♦, Helen Dickason, Lucia Durand, David Eckert and Annette Mills, Judith Edelstein and Diane McGrath, Lyle and Helen Ellis, Anatoli and Svetlana Erofeeva, Steven and Bonnie Esbensen, Peter Eschwey and Emily Barry, Jim and Karan Fairchild, James Feldmann and Alison Iles, Louise Ferrell ♦, Dana Field, Martin and Cheri Fisk, Ann Flanagan, Rod and Ruby Frakes, Melanie and Michael Freeman*, Stephan and Carla Friedt*, Cyrel Gable ♦, Mike and Mary Gallagher, John and Carolyn Gardner, Janey Gaventa, Keith and Linda Gelbrich, Eve and Rob Gill*, Anne Gillies, Barbara Gilroy, Bill and Laura Gleaves, Debra Goldenberg, Louis and Jacqueline Gordon, Kelly Grasso*, Dale Green and Wanita Miller, Patricia Greenfield and Dennis Ellis*, Ron Griffiths, Tom and Kay Harding, Tom and Diane Hart ♦, John and Judith Hays ♦, Bruce and Judy Hecht, Alan and Linda Herlihy, Karen Herold and Mary Bolton, David Hibbs and Sarah Karr, Kimberley Higgs*, Frederick Hirsch, Cornelis and Susan Hoekstra, Stewart Holmes and Maya Abels ♦, Mike and Lyla Houglum, Mike and Carol Huntington, Denis and Janet Jarvis, Norm and Debbie Johnson, Joseph and Cathryn Kasper, Susan Keiser*, Ken and Eleanor Kidd ♦, Allan Kitzman ♦, Gregg Kleiner and Lori Salus, Peter and Nancy Klingeman, John and Lygia Klock*, William and Marilyn Koenitzer, Rose Kraft ♦, Keli Kuykendall*, Clem and Janet La Cava, Glenn Lamb and Susan Knight, Andy and Evelyn Landforce ♦, Lawrence and Rebecca Landis, Jim and Nancy Landkamer, Catharine Lannan*, John and Joanne Lattin, Muriel Lawrence ♦, Shelley Lee*, Ann Shriver and Larry Lev*, Janet Lincoln*, Luke Lindahl-Ackerman, Roger and Whitney Lindquist, David and Susan Livingston, Janice and Chris Lorenzen*, Walter and Patricia Loveland, William Lunch and Caroline Kerl, Heather MacKay-Gimino*, Patrick and Rosemarie Mahoney, Mike and Miriam Maier ♦, Eugene Majerowicz ♦, Bruce Mangers and Beth Madison, Thomas and Viola Manning, Ron and Ann Marek, Keith Martin and Caryl Uhler, Jim and Betty McCarty, Tom and Patty McClintock, Jessica McDonald*, Floyd and Beverly McFarland, Margie McShane*, Tom and Sue Millan ♦, Richard and Dorothy Miller ♦, Betty Miner, Pat and Dee Mooney, Frank Morris ♦, RJ Morris*, Dorothy Mortenson*, Rene and Pamela Moye, Keith and Elizabeth Muckleston, John Myers, Andrea Mykrantz, Robert and Priscilla Newton, Andrew and Karen Nousen, James and Mary Anne Nusrala, Gordon Ormsby and Marion Gregor, Bruce Osen and Jane Averill, Lloyd and Lois Osen, Lon Otterby*, Scott and Joann Overton, Laurence and June Padman, Cynthia Panshin, William Percy, Astrid Peterson*, Ernest Peterson, John Pinkerton, David Plaehn, Ron and Marianne Post*, Bill and Lena Proebsting, Charles Quinn and Dana Abel, Peter Rabenold and Patricia Haggerty, Mark and Alice Rampton ♦, Mark Reed and Vicki Bugbee-Reed, Todd Reeve*, Paul Regan and

* = New Member

♦ = 20 Year Member

Continued on page 8

GREENBELT LAND TRUST SUPPORTERS

...CONTINUED



Continued from page 7

General Circle

Janice Rosenberg, Jeffrey Reimer, Donald and Janice Reish, Kirk Rensmeyer, Jim and Sandra Ridlington, Judith Riggs*, Judy Ringle, David and Gwendolyn Robinson ♦, Kermit Rohde ♦, Ed Rust and Denise Richards*, Dana Sanchez*, Richard and Margaretta Scanlan, Johannes Schaefer and Wendy Boyd, Kim Schlessinger, Carl and Jacque Schreck, Randy Selig, Mary Alice Seville ♦, Kipp Shearman and Courtney Armentrout, William Shepard and Roberta Smith, Courtland and Linda Smith, Steve Smith*, Janet and William Smoker*, Arwed and Patricia Sommer, Roberta Sperling, Mike and Kristy Spikes, Warren and Maryanne Staton ♦, Robert and Emily Steele ♦, Joe Stevenson and Barbara Case, Lida and Michael Stevenson*, Tim Stewart and Karin Krakauer, Betty and Dana Storch, Anthony Stumbo*, Megan Sullivan*, Carol Sumner, John Swanson, Marsha Swanson ♦, Mary Thomas ♦, Kevin and Lynn Thompson, Maxine Thompson ♦, Kipp Tobias and Thom Whittier, Kathy and Dennis Tomlinson*, Ray and Darlene Topping, Charles and Clara Trainer, James Trappe, Andy and Bobbi Ungerer ♦, Tony and Louise Van Vliet ♦, Jannie Wahl*, Steve Walker*, Barbara Watrous, Jim and Kathy Weldon*, Denis and Anne White, Ethan Wilson and Sandy Riverman, Rick and Barb Wilson, Bill and Judy Winkler ♦, Mike Wolf ♦, Chuck and Gail Woosley, Ronald and Carolyn Wright, William and Lark Wysham, Nicholas and Thea Yonker, Bryan Youker*.

The Greenbelt Land Trust would like to thank the following people and businesses for their support during 2010.

Adobe Software, Afton Field Farm, Alsea Geospatial, American Bird Conservancy, American Computer and Electronic Services Corp., Anare Maintenance, Andy Cripe Photography, Barnhisel, Willis, Barlow & Stephens, Benton County Historical Society and Museum, Benton County Parks and Recreation, Benton Soil and Water Conservation District, Broadleaf Architecture, City of Albany Parks and Recreation, City of Corvallis Parks and Recreation, Corvallis Arts Center, Corvallis Farmers' Market, Cyclotopia, Devco Engineering, Eagle Digital Imaging, Ed Rust General Contractor, ESRI, First Alternative Cooperative, Fitzpatrick Ecological Consulting, Five Star Sports, Freshwater Trust, Great Harvest Bread Company, Heins Communication, Institute for Applied Ecology, Integrated Resource Management, Microsoft Corporation, Neighborhood Naturalist, Northwest Habitat Institute, ODFW, Oregon State University, Peak Sports, Robnett's Hardware, Samaritan Health Services, Starbucks, Stoker's VitaWorld, The Beanery, The Corvallis Clinic, The Nature Conservancy, The Wetlands Conservancy, Town and Country Realty, Trout Mountain Forestry, Tyee Winery, USFWS.

In 2010, Memorial Donations were made In Memory of the following:

Homer Campbell
Emily Cosci
Miriam Miller
Basil Saunders
Allen Throop

In 2010, contributions were made In Honor of the following people:

Patty Boyle
Meg Campbell
Bruce and Brenda Coblentz
Erin Hogan Freemole
Hiram and Judy Li
Margie McShane
Chris Moser
Michael Pope and Becca Lemon
Steve Walker
Ron and Carlien Williams

The Greenbelt Land Trust wishes to acknowledge First Alternative Co-Op, City of Corvallis, CH2MHill, Hewlett-Packard, Kaiser Permanente and Invitrogen Benton County and State and Federal employees for participating in the workplace giving campaign through Earth Share of Oregon.



Thank You *Contributors*

The Greenbelt Land Trust would like to make a special thank you to the 20 artists that donated their work to be auctioned off at our 'Trust the Land' fundraiser in July 2010. The Greenbelt raised just over \$5,000 at our first ever wine and art auction event!!

Howard Bruner
Judith Dedek
April Fisher
Aaron Frohnmayer
Linda Humphrey
Becca Lemon
Carolyn Madsen
Joanne McLennan
Kris Mitchell
Judy Phipps
Greg Pfarr
Denise Ross
Beatrice Rubenfield
Bill Shumway
Cy Stadsvold
Bob Stebbins
Frances Stilwell
Pam Van Londen
Tony Van Vliet
Jay Widmer



Voters Approve Over \$2 Billion for Conservation

Excerpted from Land Trust Alliance, Nov. 15, 2010, lta.org.

Last November 2010, voters sent a strong message that conservation remains a bedrock American value and a top priority, even in a bad economy.

Overall, 29 of 35 state and local land conservation funding measures were approved, generating over \$2 billion in new funding. This 83% approval rate is the highest during the past decade and the third highest rate since 1988.

In Oregon, 68 percent of voters supported Measure 76, which indefinitely continues to set aside 15% of the revenue generated by the Oregon Lottery for protection of water, parks and wildlife habitat in the state. Support was so broad that it exceeded 50% in every county of the state. This provision has generated more than \$800 million for conservation over the past decade and had been scheduled to expire in 2014.

IRA Charitable Rollover Extended through 2011

The IRA Rollover has been extended through 2011, allowing individuals aged 70½ and older to donate up to \$100,000 from their Individual Retirement Accounts (IRAs) to non-profits, without having to count the distributions as taxable income. Taxpayers age 70½ and older are required to make annual distributions from their IRAs which are then included in the taxpayers' adjusted gross income (AGI) and subject to taxes. The IRA Charitable Rollover permits those taxpayers to make donations directly to charitable organizations from their IRAs without counting them as part of their AGI and, consequently, without paying taxes on them. Since the Rollover began in 2006, millions in funding has been allocated to charitable organizations that work to enhance the livability of our communities.

If you would like to learn more about contributing through an IRA or other methods, contact Jessica McDonald, Development Coordinator, at jessica@greenbeltlandtrust.org or (541) 752-9609.



Willamette Valley Plants

These plant species have been documented on several Greenbelt Land Trust properties.

Look for them during your next visit!



fairy slipper orchid

Eve & Rob Gill



Nelson's checkermallow

Tom Koye



mule's ear

Matt Blakeley-Smith



cat's ear lily



larkspur



LASTING IMPRESSION

- Cary Stephens, departing Board President

In 1998, as a recent transplant from Eugene and a fresh-faced Corvallis attorney, I became a board member of the Greenbelt Land Trust. Like all board applicants, I was asked why I was interested in becoming a board member. My answer, as best as I can recall, mentioned my love of trail running and my appreciation for the open spaces surrounding Corvallis that Greenbelt helps protect.

From the beginning, I knew that Greenbelt's work had not been easy. As an attorney, I understood that the intersection between private property rights and community interest was often a collision of differing values. I saw the Greenbelt's role as one that attempted to coalesce and express community interests while honoring private property rights. I just hoped that I could make a difference.

My first few years as a board member were spent getting to know the other board members and the Corvallis community. Becoming friends with so many folks who cared about their shared community was personally very rewarding. Over the years, I better appreciated Greenbelt's role in Corvallis, sitting at this intersection of private and social values, an organization that could help build a sense of community by protecting the open spaces that defined Corvallis. Looking back now, I realize and appreciate what a difference the Greenbelt community has had on me. How all those I have met would shape my own life for the better in significant ways.

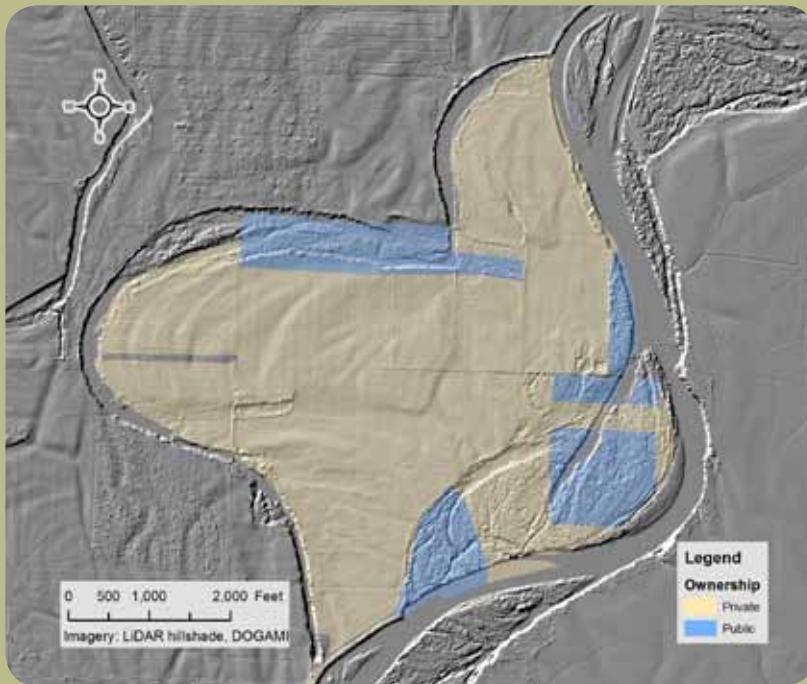
Much has changed since that first year on the Board ... during my tenure, Greenbelt has helped pass the open space bond measure, permanently protected Owens Farm, Lupine Meadows, and Evergreen Creek, helped expand Fitton Green, and purchased easements on Lone Star Ranch, Kings Valley, and two critical Willamette River properties. The organization has grown from one full-time Executive Director, to a staff of eight. Greenbelt's service area is now the entire mid-Willamette Valley, and they are looking ahead to projects from Monroe to Salem.

I want to thank Karlene McCabe for her years of dedicated service and friendship. I want to thank all the Board members I served with over the years. Your dedication and friendship is invaluable. Finally, I want to thank the entire Greenbelt community for their devotion and vision as it truly changed my life.

The Greenbelt would like to thank departing board members, Lyle Hutchens, Paige Fischer and Cary Stephens for their incredible service to the organization.

Working on the Willamette - Harkens Lake

The Harkens Lake area is considered a high priority Willamette floodplain that historically provided a key connection between the river and adjacent forests, wetlands and prairies. Currently, the Greenbelt Land Trust is discussing restoration and protection options with some of the landowners of the Harkens Lake area to restore their lands to native habitats for fish and wildlife.



The Harkens Lake area is east of Monroe and a historically important Willamette River floodplain. Public land managers, private landowners and Greenbelt Land Trust are discussing conservation and restoration actions that could impact over 600 acres in this area.



Seasonally, the river inundates sections of the Harkens Lake area. However, a flood event in 1996 demonstrated how the river occupied nearly the entire historic floodplain in this area during a major high water event.



Greenbelt Land Trust

invites you to our

Annual Meeting

Thursday, February 17th
6-8pm

First Presbyterian Church
114 SW 8th Street, Corvallis
New Wing of Building

6-6.30pm Social Gathering

6.30-8pm Greenbelt Land Trust
Annual Report and Meeting Business.
Including Cathy Macdonald, Oregon
Conservation Director with The Nature
Conservancy, who will talk about
conservation strategies in the
Willamette Valley.

The GLT is proposing a minor change to our By-Laws to be approved by the membership at the Annual Meeting. The change is within the Primary Purpose section to include 'culturally significant lands' into our work.

Current text:

...for protecting ecologically significant undeveloped lands, such as wetlands, marshes, forests, wilderness tracts, and other natural areas;...

Revised text:

...for protecting ecologically and culturally significant lands, such as wetlands, forests, working lands, native habitats, and lands of natural beauty and,...

Visit www.greenbeltlandtrust.org for info on the Annual Meeting and By-Laws change.